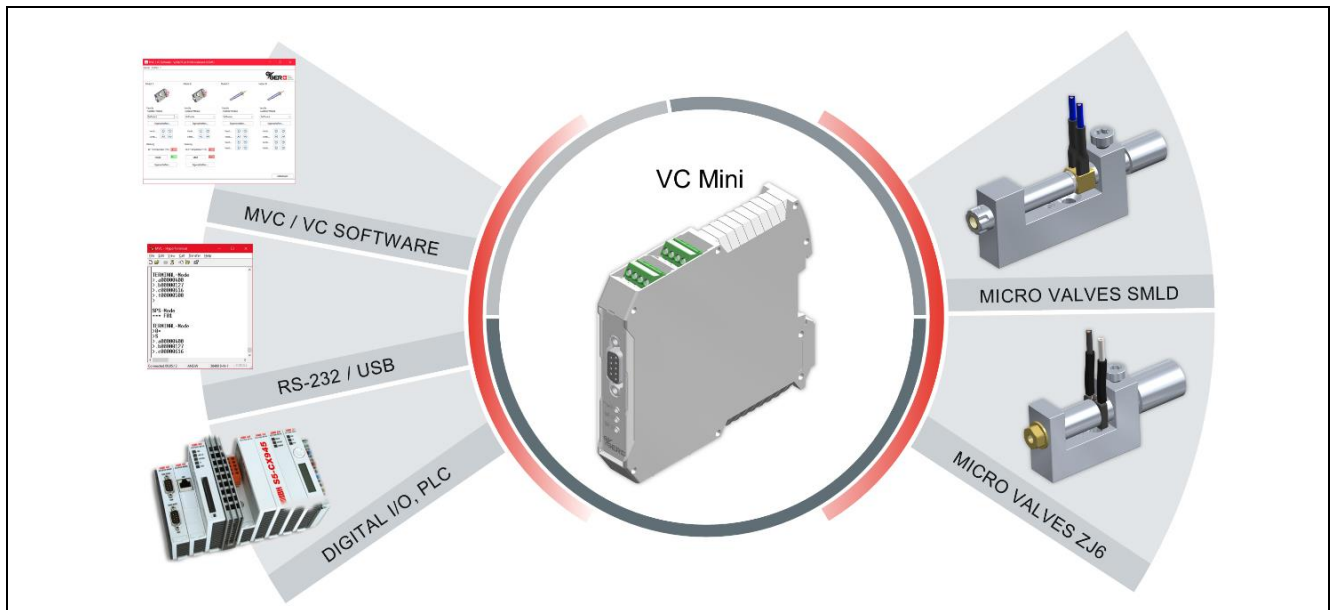


VALVE CONTROLLER VC MINI



Complete Integrated Solution

The valve controller VC Mini provides a slim solution for dispensing applications depending on customer's need. Optimal dispensing accuracy is given by μ s precise control with the "peak and hold" principle.

The microvalves (max 2 per VC Mini) will be configured by a serial interface (RS232 or USB) via Java-Software or directly with the rich command set. This allows customers to integrate the VC Mini as an intelligent driver module in existing systems or to use it as a capable stand-alone solution.

Software

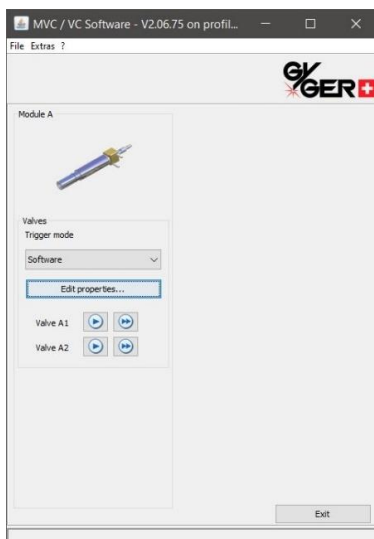
The MVC / VC Software (Java based) allows a convenient operation via a graphic interface.

A visualization of all functions can be seen within the software. The corresponding parameters (e.g. valve opening-time) can be set and precisely matched to the dispensing application.

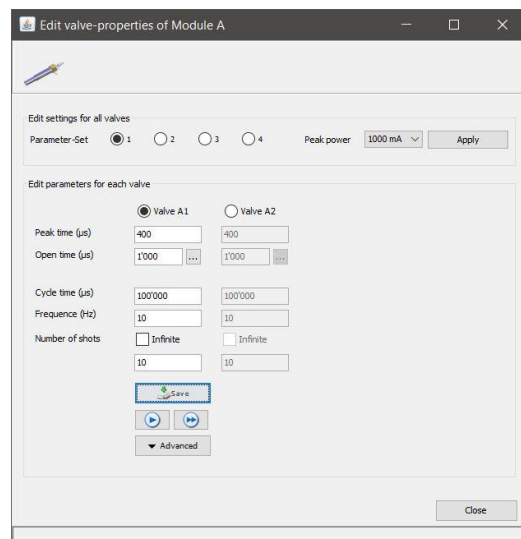
The functions can be controlled directly from the Software (e.g. triggering dispensings). In addition, different modes can be set, which allows the operation over external Hardware-I/O-signals. On demand a complete configuration can be saved and loaded from the hard disk.

SCREENSHOTS

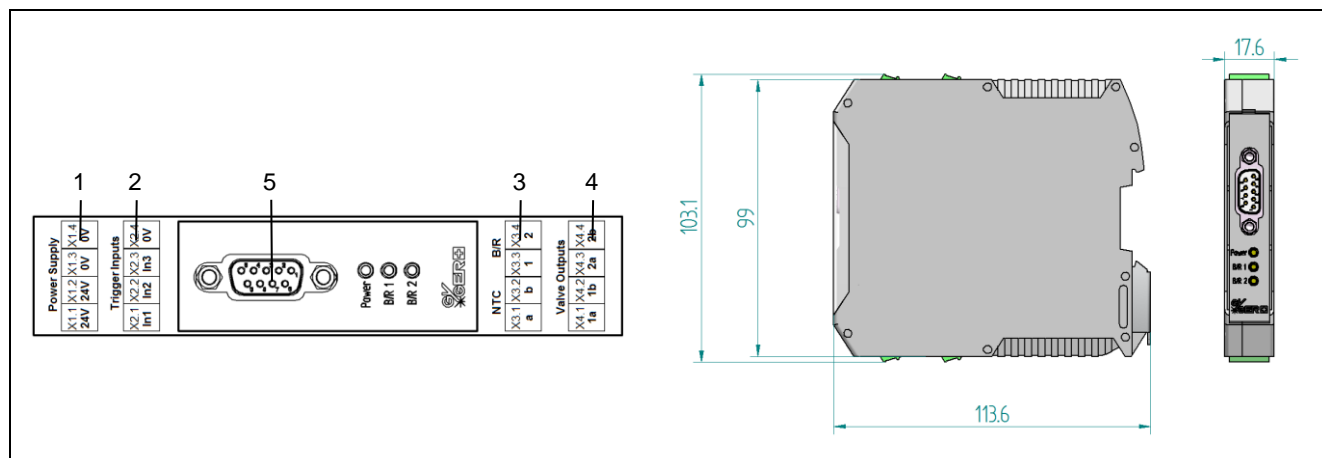
MVC / VC Software main screen



Edit valve-properties



SYSTEM OVERVIEW



General Specifications		
1	Required Power Supply	24 V, max. 1 A
	Weight	0.1 kg
	Dimensions	113.6 x 103.1 x 17.6 mm
	Mounting	Housing prepared for mounting on a 35 mm DIN rail
5	Interface	Serial point to point connection (UART) via RS232 or USB
	Operating	<ul style="list-style-type: none"> ➤ Graphic Windows-Interface with Gyger MVC / VC-Software (Java based) ➤ Alternative direct communication via commands over the interface
	Approvals	CE

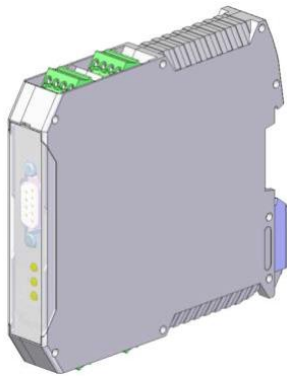
Specifications of the Power Output (for valves)		
4	Possible Functions	2 Microvalves SMLD or Zitera ZJ6
	Power Output	24 V DC, respective clocked for peak+hold drive
	Current Capacity	1.3 A short time, 0.85 A constancy



Specifications for signal inputs / outputs		
2	Digital-Input	12 – 24 V DC, Rin 5.6 kOhm
3	Digital-Output	24 V DC, max. 0.5 A




Get started: downloads.fgyger.ch/vc-mini


VC MINI COMPONENTS


Modular valve control VC-Mini	Part-# 20871
<p>Including MVC / VC software (included on CD) Including RS232 / USB connection cable</p> <p>Power supply and connection cable to the valves must be ordered separately if required!</p>	
	

Connection cable			
<p>Connection cable for connecting the valve coils to the valve controller.</p> <p>Both cables have a 4-pin Phoenix connector for connection to the VC Mini controller. At the other end are the connectors for the valve coils.</p> <p>Design: Round cable unshielded, cable sheat made of PVC. Strand cross section: 0.14 mm².</p>			
		Example image	
Product type	Connectors	Length	Part-#
VC Mini 2V (default)	2 x 2 pin (for 2 micro valves)	1.8m	21201
VC Mini 2V (Long)	2 x 2 pin (for 2 micro valves)	3m	23688
 Suitable for the Gyger valve coils with Molex connector			

VC MINI COMPONENTS

Desktop power supply VC Mini	Part-# 21200
<p>Desktop power supply to power the VC Mini controller.</p> <p>Input: 100-240 VAC, 50/60 Hz (connector C7) Output 24 VDC / 2.5 A (Phoenix 4-pin)</p> 	
<p>i Without power cord</p>	

Power cord	
<p>Power cord for desktop power supply. It is available region-specific, the individual versions are listed below.</p> 	
Type	Part-#
Euro; Connector socket C7	18768
USA; Connector socket C7	17878
UK (Type G, BS 1363); Connector socket C7	21305

Power adapter MVC 1 / VC Mini	Part-# 18788
<p>Snap-on power supply for DIN rail</p> <p>Dimensions W x H x D: 45 x 75 x 100 mm</p> <p>Input: 85-264 VAC, 50/60 Hz Output: 24VDC, 2.5 A.</p> 	
<p>i Without wiring, only power supply</p>	

© Fritz Gyger AG
Subject to change, technical information without guarantee
Fritz Gyger AG assumes no liability for damage resulting from the use of their products