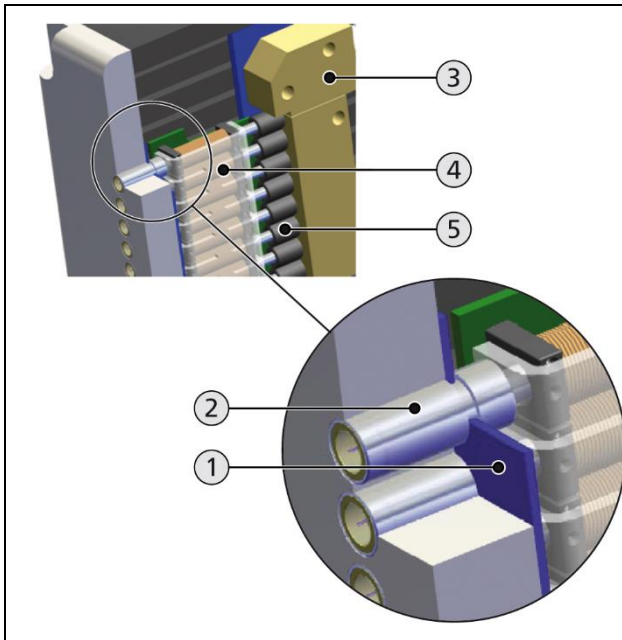


## INSTALLATION / ASSEMBLY

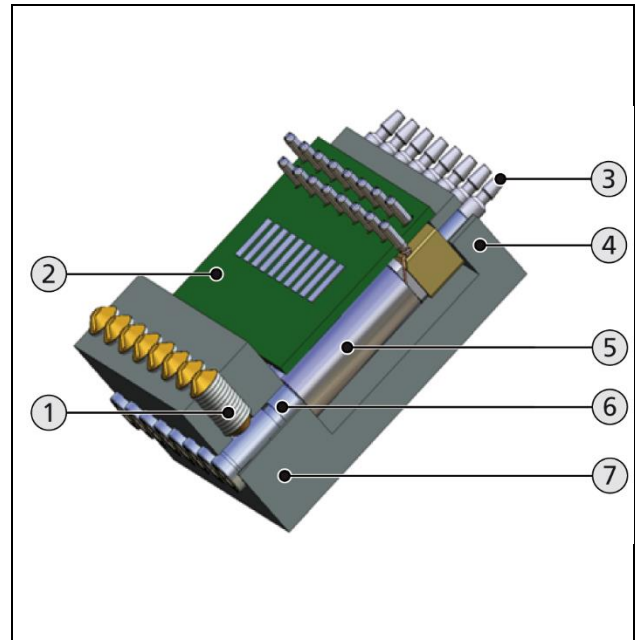
### MICRO VALVES SMLD WITH CYLINDER FASTENING TYPE



1. Holding plate
2. Micro valve
3. Fluid distributor
4. Shielding plate, coil package
5. Transition seal

The holding plate has semicircular cutouts for positioning in the micro valves. The application-specific transition seal for the fluid supply is designed as a molded part.

The fastening types are especially suited if the micro valve grid has to be as tight as possible, for example in a print head.



1. Clamping screw
2. Print, coil package
3. Tube connector fluid supply
4. Valve support
5. Valve coil
6. Micro valve
7. Valve holder

The clamping screw fixes the micro valve in the receptacle of the valve holder.

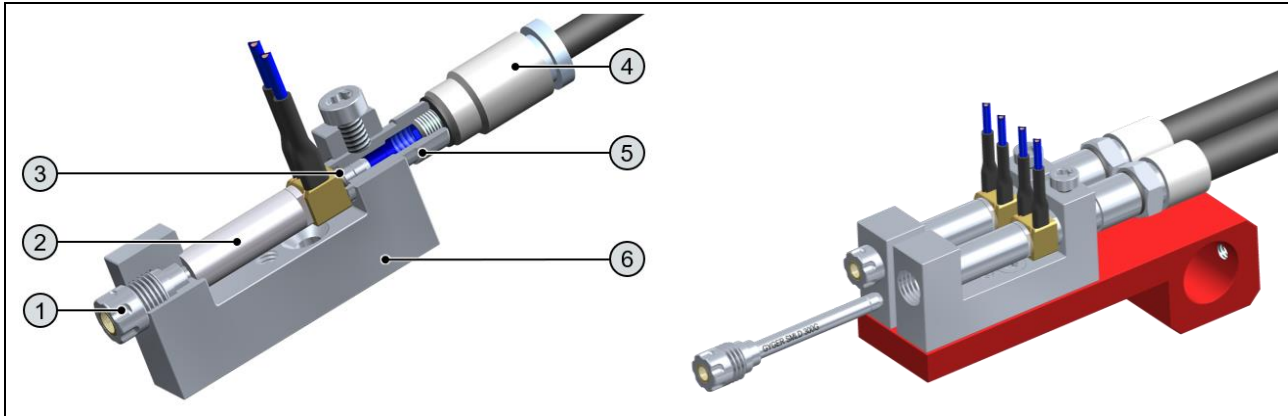
The valve support protects the micro valve (tube connection inlet) when connecting the tube supply line.



When installing the micro valve with a clamping screw, make sure that soft material, such as brass or plastic is used. Otherwise, there is a danger of damage to the micro valves.

## INSTALLATION / ASSEMBLY

### MICRO VALVES SMLD WITH THREAD FASTENING TYPE



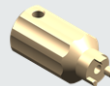
- |                |                  |
|----------------|------------------|
| 1. Micro valve | 4. Fluid supply  |
| 2. Valve coil  | 5. Inlet adapter |
| 3. O-Ring      | 6. Valve holder  |

The thread fastening is designed to allow an easy exchange of the micro valves. especially suited when the micro valves should be as easy to exchange as possible. The micro valve can be exchanged quickly and without dismantling the entire valve holder and without disconnecting the electric connections.

Ideally, this fastening type can be combined with our valve holders. Our valve holder concept covers the needs of a wide variety of applications and will convince you with its easy handling.

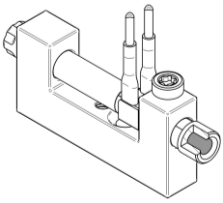


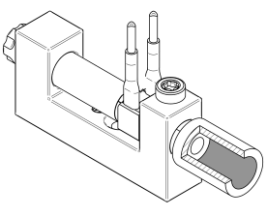
The micro valve inlets must not be touched or contaminated (skin particles). Using too much torque when mounting micro valves with threads leads to defects.

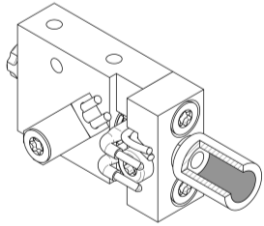


Spanner for the fastening / unfastening of micro valves.  
SMLD 300: Part-# 19237  
SMLD 300G: Part-# 19236

### VALVE HOLDER VARIANTS

SMLD 300	
	
Part-#	Description
19324	6-32 UNC flat
19328	M3
19321	10-32 UNF conical

SMLD 300G	
	
Part-#	Description
19318	¼-28 UNF
19320	M5
19314	10-32 UNF conical
24543	Luer Lock

Valve heater SMLD 300G	
	
Part-#	Description
20413	¼-28 UNF
19256	M5
19255	10-32 UNF conical
24583	Luer Lock

Part-# contains holder, coil unit with 300 mm wire and plug, inlet adapter with O-ring (viton)  
Valves must be ordered separately!